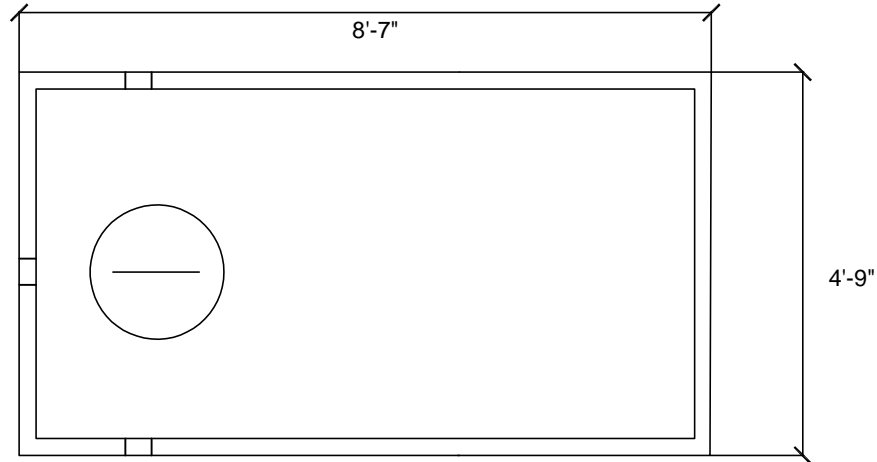


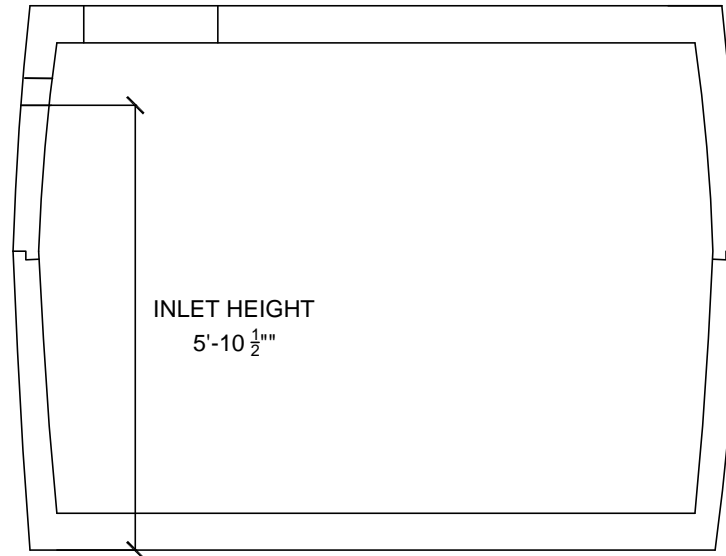
**CAMPBELL'S CONCRETE LTD.**  
 420 MT. EDWARD ROAD, P.O. BOX 373 • CHARLOTTETOWN, P.E.I. C1A 7K7

# W2.2H

## 1000 IGAL HOLDING TANK



TOP VIEW



CROSS SECTION

**SPECIFICATIONS:**  
 APPROVED BY PEI DEPT. OF ENVIRONMENT  
 5000 psi AT 28 DAYS  
 AIR ENTRAINING 5-7%  
 10mm REBAR REINFORCING  
 FIBRE MESH REINFORCING

DESCRIPTION	ITEM#	OUTSIDE DIMENSIONS			THICKNESS			INLET	WEIGHT
		W	L	H	WALL	FLOOR	TOP		
1000 GAL HOLDING TANK	W2.202	4'-9"	8'-7"	6'-9"	2 1/2"	3 1/2"	3 1/2"	5'-10 1/2"	8350